

MONTHLY MEMBERSHIP PROGRESS REPORT

LOCATION ONTARIO

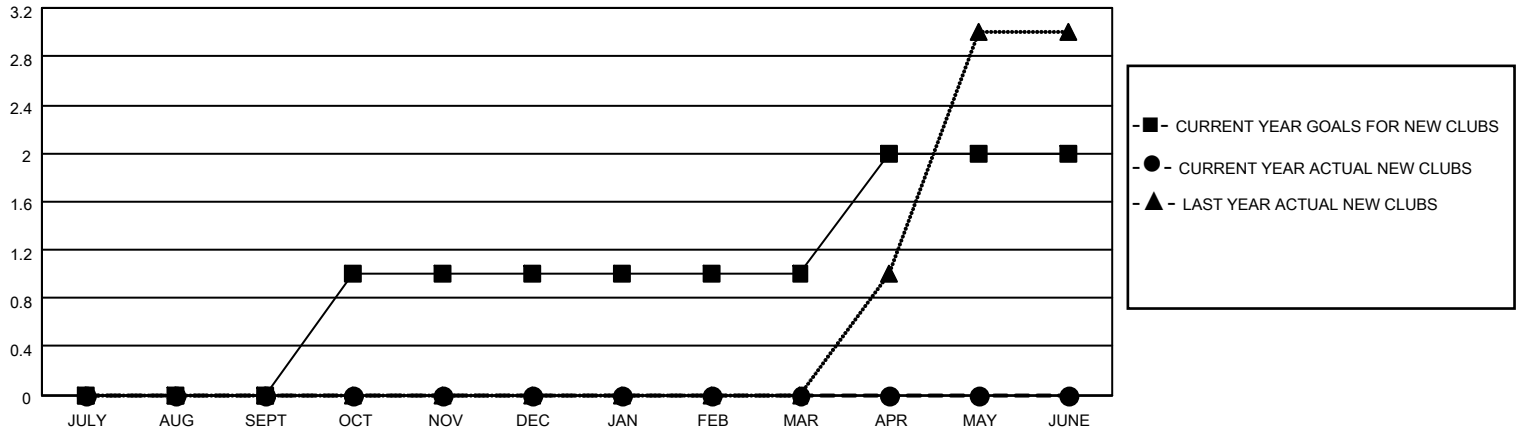
District A 16

Results as of: 5/31/2022

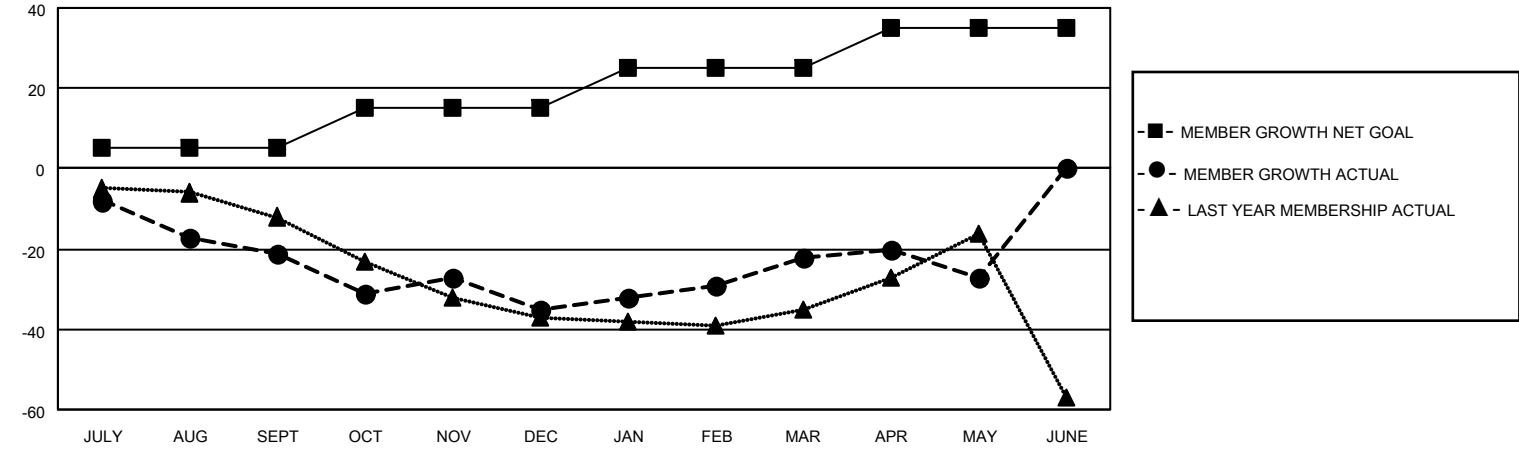
Clubs			
RESULTS FOR 2021-2022			
QUARTER	NEW CLUB GOAL	NEW CLUBS	DROPPED CLUBS
JULY/AUG/SEPT	0	0	0
OCT/NOV/DEC	1	0	0
JAN/FEB/MAR	0	0	0
APR/MAY/JUNE	1	0	0

Members			
RESULTS FOR 2021-2022			
QUARTER	MEMBER GROWTH NET GOAL	MEMBER GROWTH ACTUAL	DROPPED MEMBERS ACTUAL (including transfers)
JULY/AUG/SEPT	5	16	30
OCT/NOV/DEC	10	36	45
JAN/FEB/MAR	10	27	12
APR/MAY/JUNE	10	17	21

GOALS AND ACTUAL NEW CLUBS CUMULATIVE



GOALS AND ACTUAL MEMBERS CUMULATIVE



DROPPED CLUBS: 0	
<u>DROPPED MEMBERS</u>	
DECEASED	15
CLUB CANCELLED	0
OTHER	93
TOTAL	108

33 CLUBS OF 55 ADDED 1 OR MORE NEW MEMBERS

[CLICK HERE FOR CUMULATIVE MEMBERSHIP DATA](#)

<u>GENDER DISTRIBUTION</u>	
MALE	716 (64.62%)
FEMALE	392 (35.38%)
NON BINARY	0 (0.00%)
PREFER NOT TO ANSWER	0 (0.00%)
TOTAL FAMILY UNIT MEMBERS	283
FAMILY MEMBERS PAYING HALF DUES	148